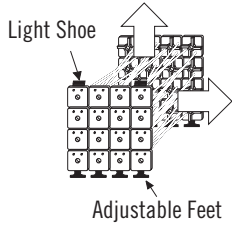
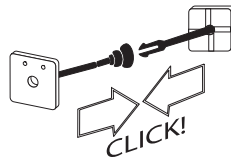


ES Pop-Up Instructions

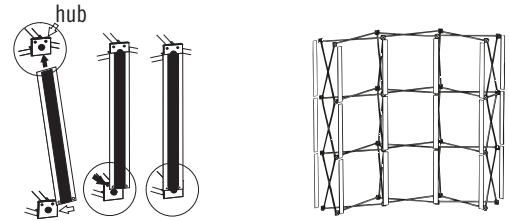
1. Pull on frame to open



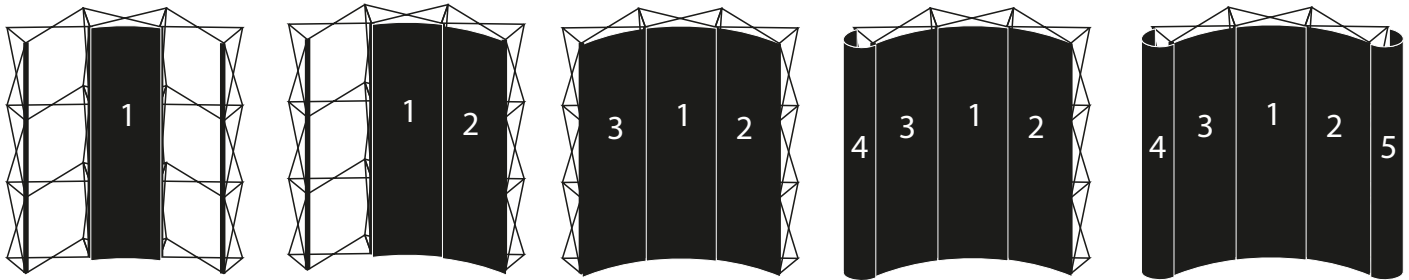
2. Lock the connectors together



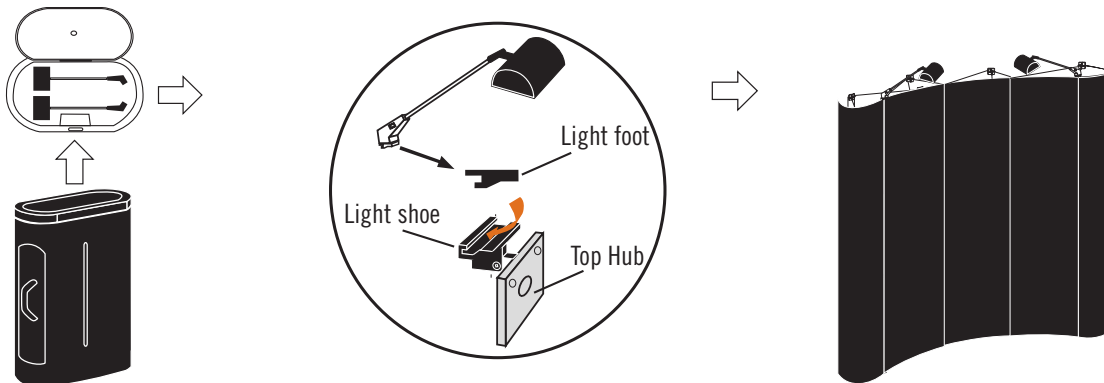
3. Attach the Self-Aligning-Magnetic Bars (SAM Bars)



4. Attach fabric or graphic panels starting with the center face panel (#1), follow with the other face panels and put the endcaps on last.



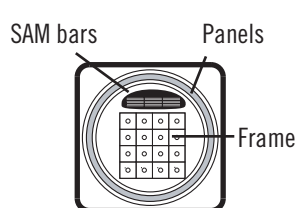
5. Attach your lights after the Pop-Up is set-up, you may need to safely use a step stool or chair to reach.



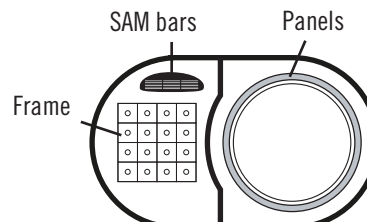
Dismantle:

Remember to always roll your panels with the fabric or graphic side to the outside!

Start by removing the endcaps and placing them into the case one at a time. Follow with the face panels, putting your center panel in last. Next time you set-up, the center panel (the first to be attached) will come out of the case first.



ES Super Case



ES Oval Case